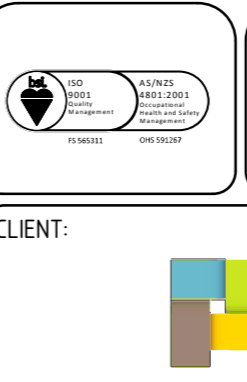
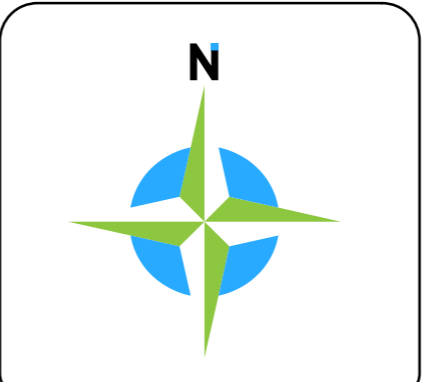


| LAND USE / STATISTICS    |            |                   |               |
|--------------------------|------------|-------------------|---------------|
| STAGE 7                  |            | WAPC Ref:- 153447 |               |
| PARCEL TYPE              | MAP SYMBOL | NUMBER OF PARCELS | AREA (ha)     |
| Traditional Lots         |            | 58                | 2.0165        |
| Public Open Space        | P.O.S.     | 0                 | 0             |
| Roads (inc. truncations) |            |                   | 0.7258        |
| <b>STAGE TOTAL</b>       |            | <b>58</b>         | <b>2.7423</b> |

| Ver. | Initial Issue | Description | TAV | Date     | TAV | Checked |
|------|---------------|-------------|-----|----------|-----|---------|
| A    |               |             | TAV | 4/4/2018 | TAV |         |

FILES  
map\COGO-Plan-040  
Control Register:-  
File Name:- 99276an-040a.dgn

PRECAL LEGEND  
See below Lot Stats table for further information  
- Stage Boundary

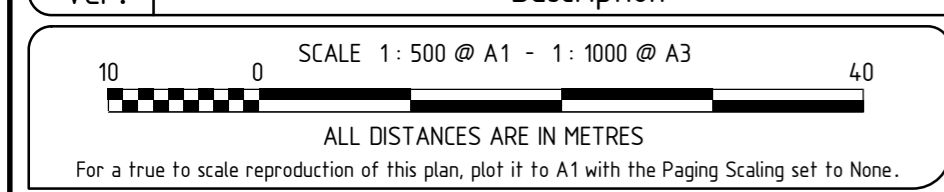


**FLAMEWOOD ESTATE**  
**STAGE 7**  
**Brabham**

CLIENT:  
**PARCEL**

The contents of this plan are current and correct as of the date stated within the revision panel. All consultants and persons wishing to utilise this data should satisfy themselves of this plan's currency by contacting the Mullen Nolan Group.

Project Mngr: Trevor Veen Datum: PG594



| Ver. | Initial Issue | Description | TAV | Date     | TAV | Checked |
|------|---------------|-------------|-----|----------|-----|---------|
| A    |               |             | TAV | 4/4/2018 | TAV |         |

All areas and dimensions depicted on this plan are subject to survey and Landgate registration. All cadastral information external to the stage/s which form the subject of this plan are not guaranteed and are supplied as a guide only.



MC MULLEN NOLAN GROUP  
Level 1, 2 Sabre Crescent  
Janakot, W.A. 6164  
PO Box 3535, Success  
W.A. 6964, Australia  
ABN 90 059 363 311  
Offices in: Broome, Bunbury, Kununurra, Newman, Onslow, Port Hedland

Tel: (08) 6436 1399  
Fax: (08) 6436 1500  
info@mngsurvey.com.au  
www.mngsurvey.com.au

Project Mngr: Trevor Veen Datum: PG594

**99276 - 040 - A**  
Number Number Version